

CAST OR FORGED

GATE, GLOBE AND CHECK VALVES



CAST GATE, GLOBE AND CHECK VALVES



Design standard :

Gate Valve : API 600, API 6D, BS EN ISO 10434

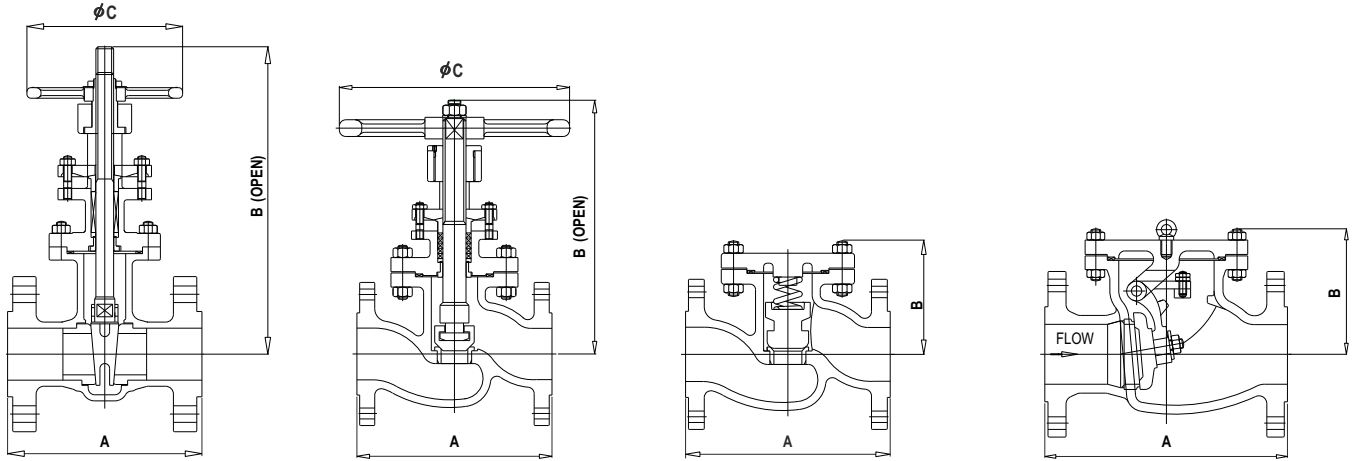
Globe Valve : BS 1873

Check Valve : BS 1868

Testing standard : API 598, BS EN ISO 12266

Pressure rating : Class 150, 300

Ends : Flanged, class 150, 300



All dimensions are in mm

Size	Gate valve						Globe valve						Lift check valve				Swing check valve					
	A		B		φC		A		B		φC		A		B		A		B			
	Class	Class	Class	Class	Class	Class	Class	Class	Class	Class	Class	Class	Class	Class	Class	Class	Class	Class	Class	Class		
	150	300	150	300	150	300	150	300	150	300	150	300	150	300	150	300	150	300	150	300	150	300
15	108	140	210	210	100	100	108	152	205	205	100	100	108	152	72	72	----	----	----	----	----	----
20	117	152	215	215	100	100	117	178	210	210	100	100	117	178	75	75	----	----	----	----	----	----
25	127	165	250	250	150	150	127	203	230	230	150	150	127	203	79	79	----	----	----	----	----	----
32	140	178	265	265	150	150	140	216	235	235	150	150	140	216	83	83	----	----	----	----	----	----
40	165	190	300	300	200	200	165	229	260	260	200	200	165	229	95	95	165	241	95	95	95	95
50	178	216	345	345	200	200	203	267	295	295	200	200	203	267	108	108	203	267	120	120	120	120

1. Dimension "A" as per ASME B16.10
2. Flanges as per ASME B16.5

Name of the part	Materials of construction
Body / Bonnet / Cover	WCB / LCB / CF8 / CF8M
Hand wheel	Malleable iron
Gland bush / Seat ring / Stem	410 / 304 / 316
Yoke sleeve	A 536 Gr.65-45-12
Wedge / Disc / Plug	CA15 / CF8 / CF8M / CF3M
Gland flange	Carbon steel-Galvanised
Gland packing	Graphite
Gasket	Spiral wound SS 304 with Grafoil filled
Body stud	A 193 Gr.B7-Zn.plated
Body nut	A 194 Gr.2H-Zn.plated
Spring	316

- Stellite trim and Other materials available on request
- IBR III-C Certificate on request
- All Body and bonnet in corrosion resistant materials are investment casting and are radiographic quality as per ASTM E 446 Level III

CAST GATE, GLOBE AND CHECK VALVES



Design standard :

Gate Valve : API 600, API 6D, BS EN ISO 10434

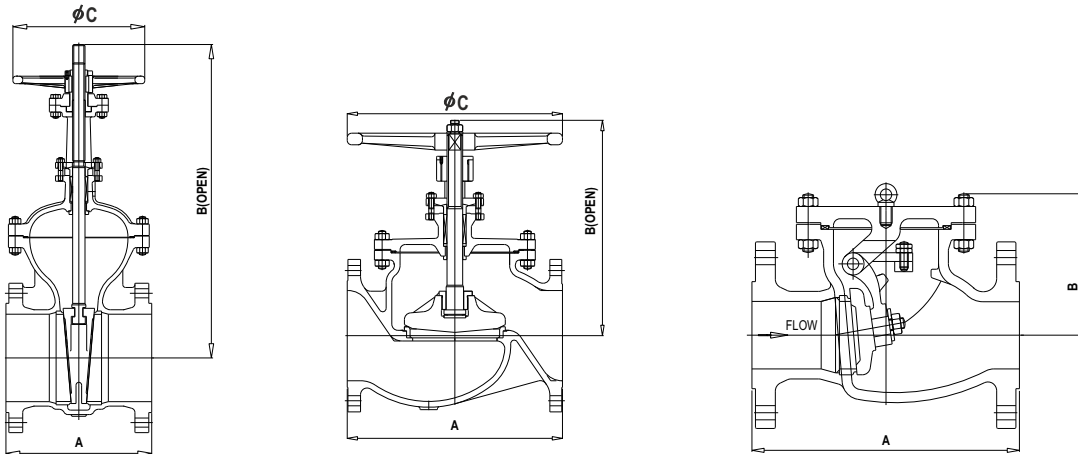
Globe Valve : BS 1873

Check Valve : BS 1868

Testing standard : API 598, BS EN ISO 12266

Pressure rating : Class 150, 300

Ends : Flanged, class 150, 300



All dimensions are in mm

Size	Gate valve						Globe valve						Swing check valve			
	A		B		phi C		A		B		phi C		A		B	
	Class	Class	Class	Class	Class	Class	Class	Class	Class	Class	Class	Class	Class	Class	Class	
	150	300	150	300	150	300	150	300	150	300	150	300	150	300	150	300
65	190	241	416	425	200	250	216	292	290	351	200	250	216	292	125	135
80	203	283	478	490	250	250	241	318	345	362	250	300	241	318	135	145
100	229	305	555	550	250	300	292	356	355	413	300	450	292	356	155	175
125	254	381	690	700	300	450	356	400	410	471	300	450	330	400	185	205
150	267	403	790	790	300	450	406	444	450	580	450	600	356	444	210	220
200	292	419	950	985	450	450	495	559	553	780	600	750	495	533	226	255
250	330	457	1160	1200	450	600	216	292	290	351	600	GO	622	622	265	305
300	356	502	1370	1450	600	600	241	318	345	362	750	GO	698	711	320	360
350	381	762	1580	1600	600	750	-----	-----	-----	-----	-----	-----	787	838	375	400
400	406	838	1775	1930	600	1000	-----	-----	-----	-----	-----	-----	-----	-----	-----	-----
450	432	914	1950	2290	750	GO	-----	-----	-----	-----	-----	-----	-----	-----	-----	-----
500	457	991	2225	2440	750	GO	-----	-----	-----	-----	-----	-----	-----	-----	-----	-----
600	508	1143	2560	2475	1000	GO	-----	-----	-----	-----	-----	-----	-----	-----	-----	-----

1. Dimension "A" as per ASME B16.10.
2. Flanges as per ASME B16.5.
3. IBR III-C Certificate on request.
4. GO = Gear operated.

Name of the part	Materials of construction
Body / Bonnet / Cover	WCB / LCB / CF8 / CF8M
Seat Ring / Wedge / Disc / Hinge	WCB * / LCB / CF8 / CF8M
Stem / Bonnet bush / Packing support ring / Disc washer / Hinge pin Spacer washer / Thrust plate / Gland / Disc nut and Pin	410 / 304 / 316
Gland flange	Carbon Steel
Stem packing	Graphite
Gasket	Spiral wound SS304 with Grafoil filled
Yoke sleeve	A 536 Gr.65-45-12
Hand wheel	Malleable Iron / Carbon Steel
Body stud / Nut	A 194 Gr.2H / A 193 Gr.B7

- Optional for corrosion resistant shell material
- * 13% Cr. Overlay over WCB except Hinge
- Stellite trim and Other materials available on request

FORGED GATE, GLOBE AND CHECK VALVES

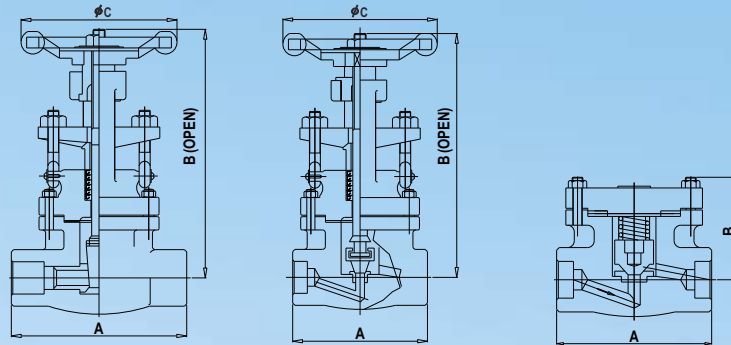
Design standard : API 602, BS EN ISO 15761

Testing standard: API 598, BS EN 12266

Pressure rating : Class 800

Ends : Screwed, Socket, Welding ends

: Flanged, class 150, 300, 600



All dimensions are in mm

RB=Reduced bore

SB=Standard bore

Size	Gate valve						Globe valve						Lift check valve			
	A		B		phi C		A		B		phi C		A		B	
	RB	SB	RB	SB	RB	SB	RB	SB	RB	SB	RB	SB	RB	SB	RB	SB
15	88	92	162	176	96	96	88	92	170	185	96	96	88	92	54	66
20	92	106	176	195	96	96	92	106	185	194	96	96	92	106	66	72
25	106	128	195	271	96	150	106	128	194	283	96	150	106	128	72	102
32	128	128	271	278	150	150	128	128	283	292	150	150	128	128	102	108
40	128	140	271	278	150	150	128	140	283	292	150	150	128	140	108	108
50	140	----	278	----	150	----	140	----	292	----	150	----	140	----	108	----

1. Dimension "A" as per manufacturers standard
2. Screwed ends to BS 21, ANSI B1.20.1 and IS 554
3. Socket weld ends to ASME B16.11
4. Welding ends to ASME B16.25
5. Valves are available with weld-on-flanges of class 150,300 and 600.Face to Face dimensions for class 150 rating will be as per class 300
6. IBR III-C certificate on request

Name of the part	Materials of construction
Body / Bonnet / Cover	A 105 / LF2 / F304 / F316 / F304L / F316L / F11 / F22
Hand wheel	Malleable iron
Gland bush	410 / 304 / 316 / 304L / 316L
Yoke sleeve	A 536 Gr.65-45-12
Seat ring	410 / 304 / 316 / 304L / 316L
Stem	410 / 304 / 316 / 304L / 316L
Wedge / Disc / Plug	CA-15 / CF8 / CF8M / CF3M
Gland flange	A105-Galvanised
Gland packing	Graphite
Gasket	Sprial wound SS 304 with Grafoil filled
Body stud	A 193 Gr.B7-Zn.plated
Body nut	A 194 Gr.2H-Zn.plated
Spring	316

■ Stellite trim and other materials available on request